

Sport-Thieme® Play and Leisure Goal

Thank you very much for choosing a Sport-Thieme product!

Please read the instructions fully before you assemble the equipment, so you can enjoy the product and safety is guaranteed. We are happy to answer any questions you may have.



Assembly instructions for Art.-Nr. 243 5507

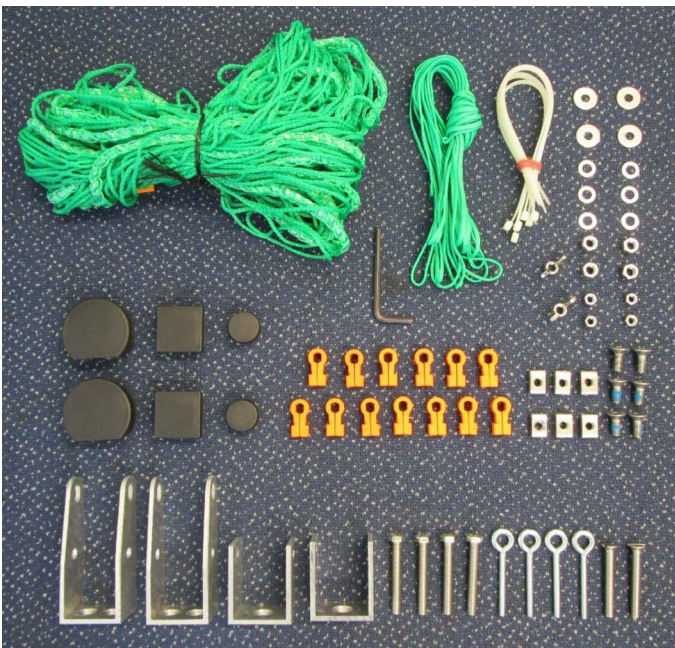
1. Scope of delivery

Please check the following content before assembly.



Content:

1x bar/upright construction
2x net hoop
1x accessories and net



Accessories:

13x safety system net holder
2x bottom hinge (U-profile 60 x 50 x 60 x 4, length 40 mm)
2x top hinge (U-profile 115 x 50 x 115 mm, length 40 mm)
2x upright's cap 80 x 40, black
2x plastic cap, black, 40 x 40
6x nut 20mm, M 8
4x hexagon screw DIN 933, M 8 x 60
6x safety hexagon socket screw DIN 7991, M 8 x 16
2x slotted countersunk head screw DIN 963, M 8 x 60
4x self-locking nut DIN 985, M 8

4x self-locking cap nut DIN 986, M 6
6x washer DIN 125, 8.4 Ø
4x washer DIN 9021, 7.4 x 22
4x ring nut M 6 x 50
2x wing nut DIN 315, M 8
2x plastic stopper Ø 28 mm
6x cable clip, long
1x Hexagon screwdriver
1x net with fixing cord
1x assembly instruction

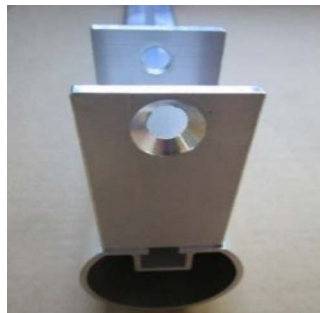
2. Assembly of the goal

We recommend to mount the goal on the grass or on a suitable surface to avoid damages of the profiles.

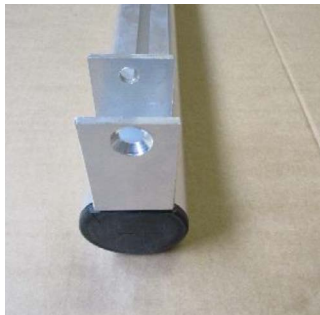
a) Lay bar/upright construction on the ground with guide rail showing upwards.



b) Stick from the bottom (upright's end) 2 nuts 20 mm, M 8 each in the guide rail of the upright and push them to the top.
Lay upper hinge with 2 fastening boreholes under the 90° elbow (at the top). Please consider that the inclined side of the hinge points to the goal inside. Push nuts 20 mm, M 8 below the boreholes of the hinge and tighten it with safety hexagon socket screws DIN 7991, M 8 x 16.



c) To fix the lower hinge stick from the bottom (upright's end) 1 nut 20 mm, M 8 each in the guide rail of the upright. Mount lower hinge with 1 fastening borehole. Please consider that the inclined side of the hinge points to the goal inside. Push nut 20 mm, M 8 below the borehole of the hinge and fix it at the upright with safety hexagon socket screw DIN 7991, M 8 x 16.



d) Beat cap 80 x 40 into the upright (use a mallet if necessary), adjust lower hinge and tighten fixing screw. Take care that the hinge at the bottom is flush with the upright's cap.



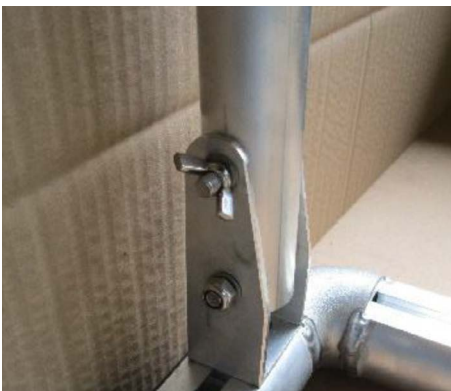
e) Fix net hoops in the hinges.
Take care that the end of the net hoop with 2 boreholes (round tube) is fixed in the upper hinge and the end with 1 borehole (square tube) is fixed in the lower hinge. Boreholes of hoops have to be congruent with boreholes of the hinges.



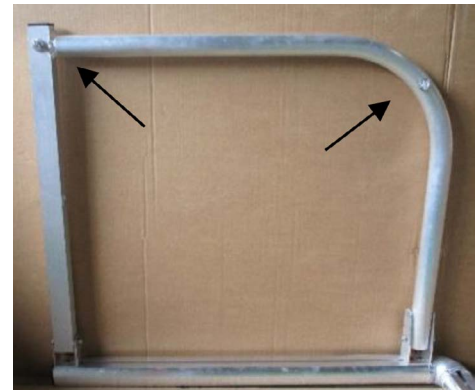
f) Fixing of the hoop at the upper hinge:
Stick from the top hexagon screw DIN 933, M 8 x 60 through the first borehole of hinge and hoop. Then add washer DIN 125, Ø 8.4 mm at the hinge lower side, screw and tighten self-locking nut DIN 985, M 8.
Fixing of the hoop at the lower hinge:
Stick from below slotted countersunk head screw DIN 963, M 8 x 60 through hinge and hoop. Then add washer DIN 125, Ø 8.4 mm at the hinge upper side, screw and tighten self-locking nut DIN 985, M 8.



- g) Beat 1 plastic cap 40 x 40 each into the net hoop ends (back of square tube).



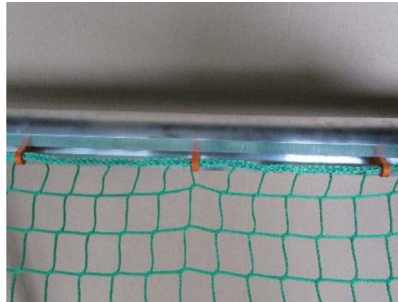
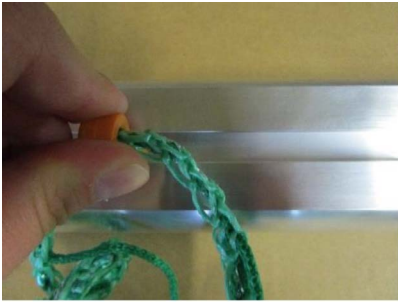
- h) Press net hoop to the outside. Stick from the top hexagon screw DIN 933, M 8 x 60 through the 2nd borehole of the upper hinge and the hoop. Then add washer DIN 125, Ø 8.4 mm at the hinge lower side and screw wing nut DIN 315, M 8.



- i) Stick ring nuts M 6 x 50 through boreholes of the net hoop (position see picture below) and fix them with washer DIN 9021, 7.4 x 22 and self-locking cap nut DIN 986, M 6. Take care that rings point to the inside.

3. Assembly of the net

- a) At first fix net holders at the net rope. Bend open net holders a little and press rope into the holders. We recommend the following distribution of net holders:
crossbar : 5 pieces
upright : 4 pieces each



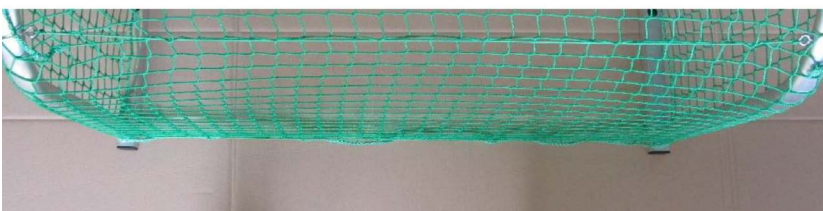
- b) After having mounted all net holders fix net at the goal construction. Stick net holders in the net hook rail and fix them with a 90 degrees' rotation. In case, use for this a thin screw driver.



- c) Fix net at the bottom of net hoops with 3 cable clips. Cut projecting parts.



- d) Cut the attached cord in half so that there are 2 short cords. Fix the end of one cord in one upper ring nut and knot it well. Pull the cord through the net meshes and fix it in the 2nd upper ring nut and knot it well. Repeat the steps with the 2nd cord in bottom ring nuts.



- e) Dismantling of the net is also done by rotation of the net holders through 90 degrees. In case, use again a thin screw driver.



4. Storage of the goal

To save space during storage unscrew wing nuts of the upper hinges and remove screws. Now the net hoops can be folded. Then screw again wing nuts and screws slightly into the 2nd borehole of the upper hinges so that they don't get lost.

6. Maintenance, safety and storage instructions

Check screwed fastenings regularly and change damaged and wearing parts if need be.

Notice: Due to our continuous quality check of products and equipment technical modifications are possible.

This goal is constructed only for soccer matches and not for other purposes. Check all screwed fastenings before use and repeat it from time to time. It has to protected against overturning at any time.

Do not climb net or goal frame. It is not allowed to fix additional parts or extensions at the goal frame which may impair the safety

6. Maintenance, safety and storage instructions



Check screwed fastenings regularly and change damaged and wearing parts if need be.

Notice: Due to our continuous quality check of products and equipment technical modifications are possible.

This goal is constructed only for soccer matches and not for other purposes. Check all screwed fastenings before use and repeat it from time to time. It has to protected against overturning at any time.

Do not climb net or goal frame. It is not allowed to fix additional parts or extensions at the goal frame which may impair the safety of the goal (according to DIN EN 16579).

To avoid damage and misuse goals have to be stored secured and in an upright position when not in use.

Only use water for cleaning the surfaces. Do not use alcohol or any aggressive chemicals!